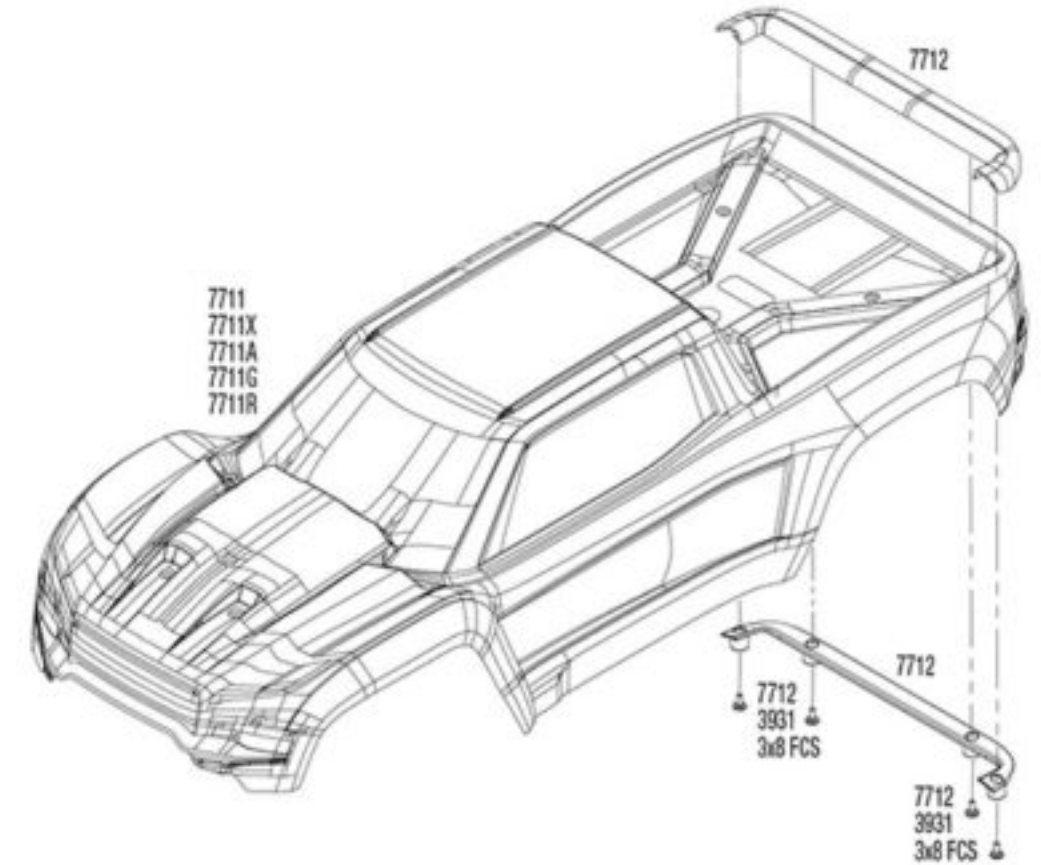
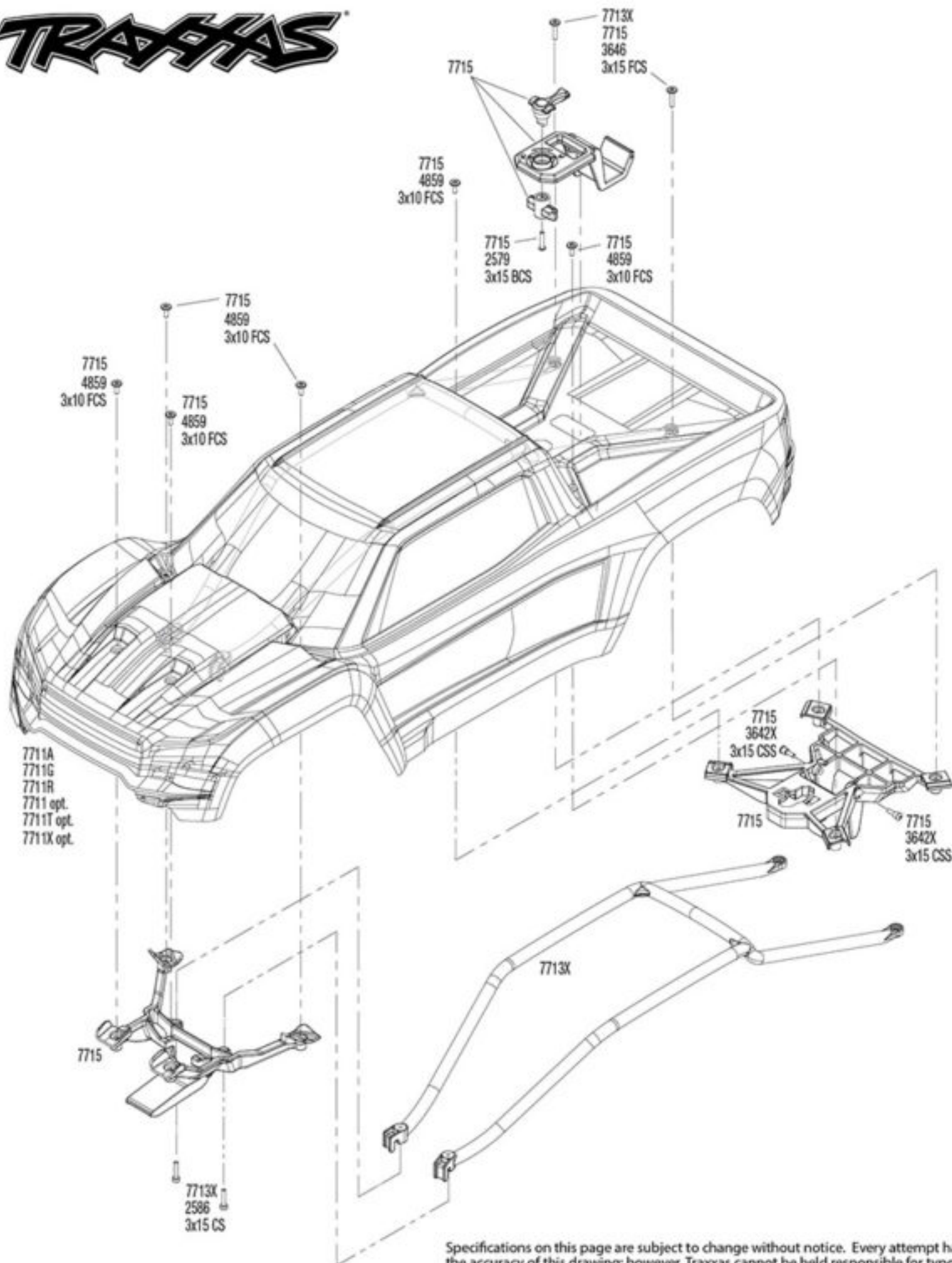
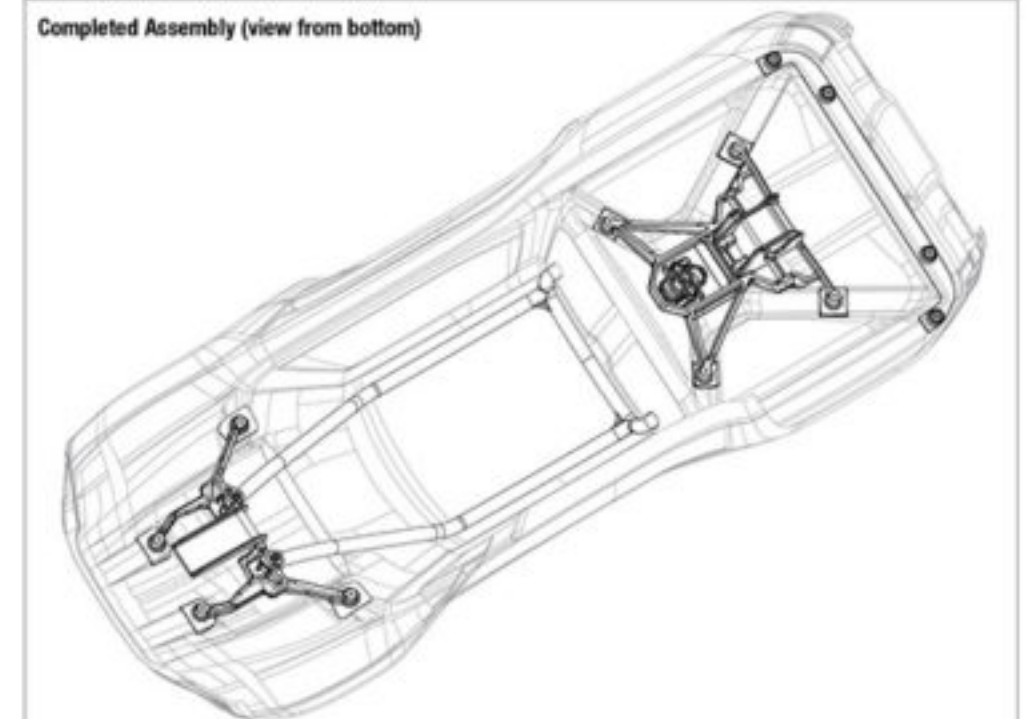


## Body Assembly



Completed Assembly (view from bottom)



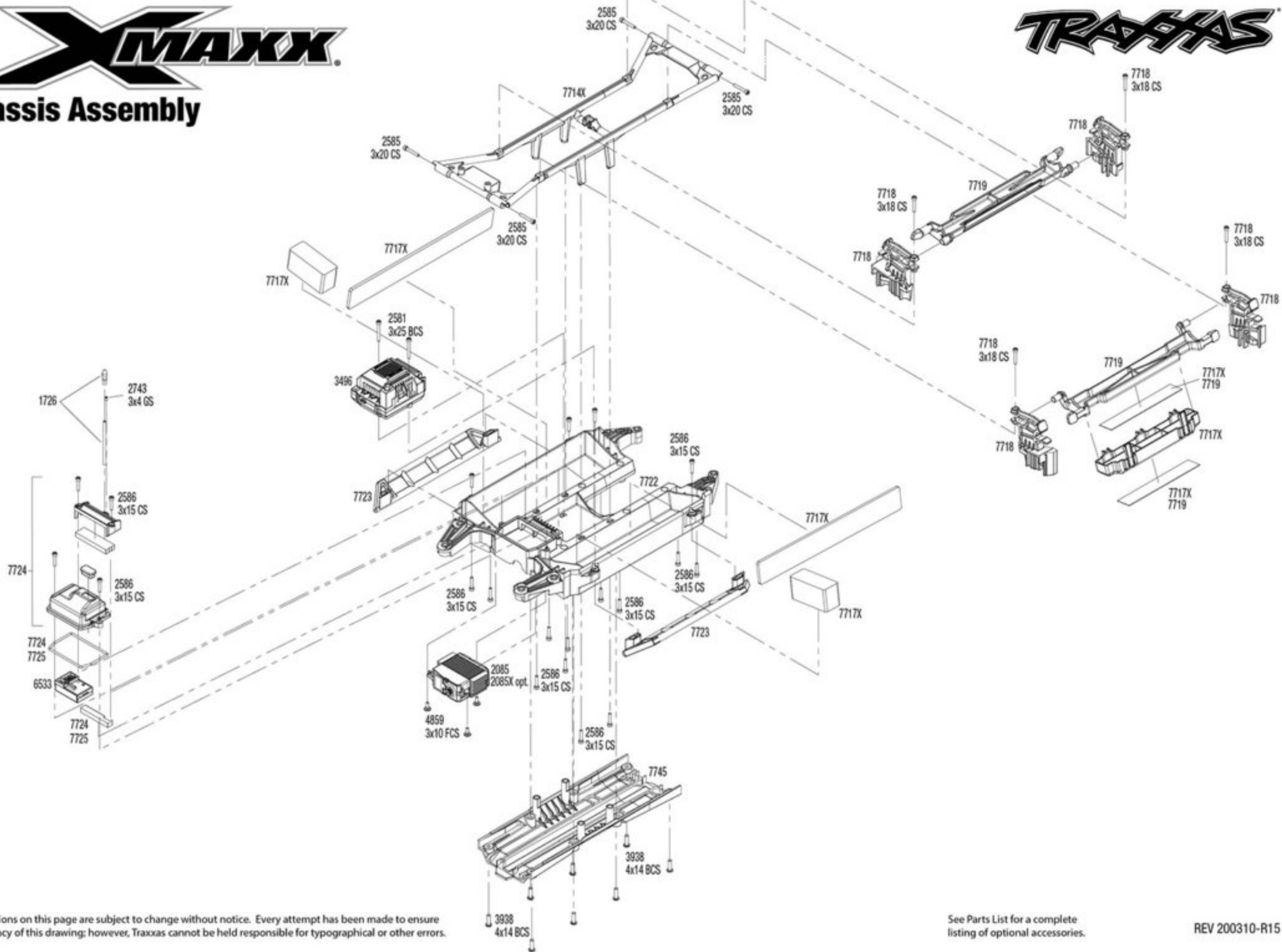
Specifications on this page are subject to change without notice. Every attempt has been made to ensure the accuracy of this drawing; however, Traxxas cannot be held responsible for typographical or other errors.

See Parts List for a complete listing of optional accessories.

REV 200310-R15



## Chassis Assembly

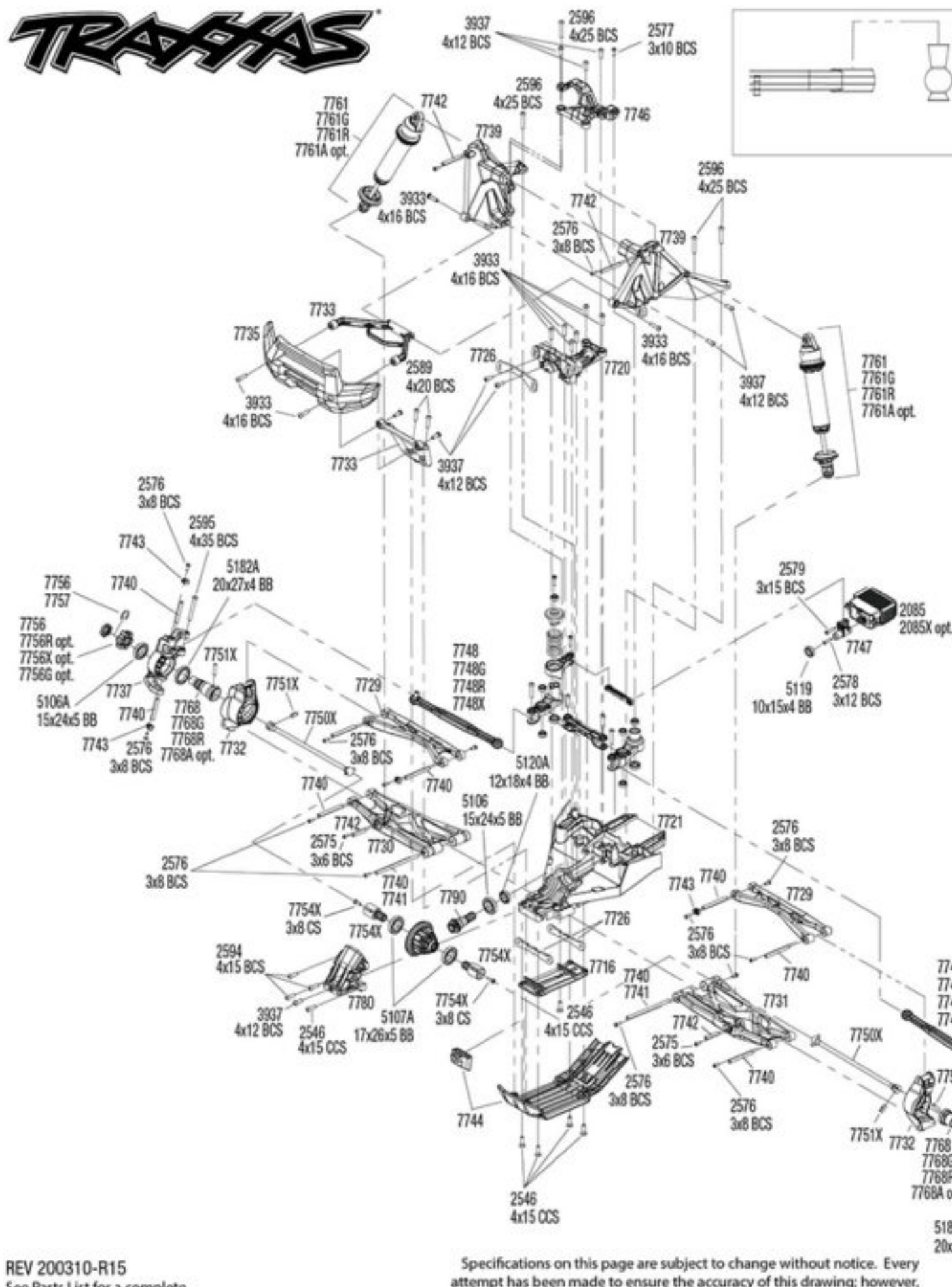


Specifications on this page are subject to change without notice. Every attempt has been made to ensure the accuracy of this drawing; however, Traxxas cannot be held responsible for typographical or other errors.

See Parts List for a complete listing of optional accessories.

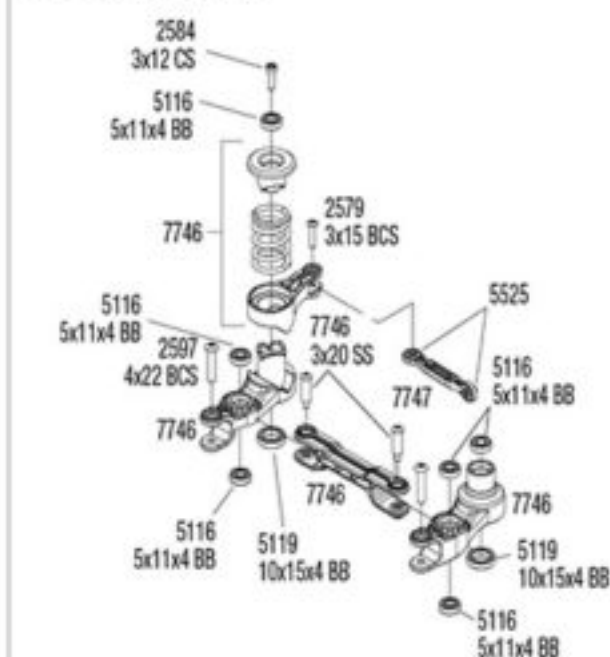
REV 200310-R15



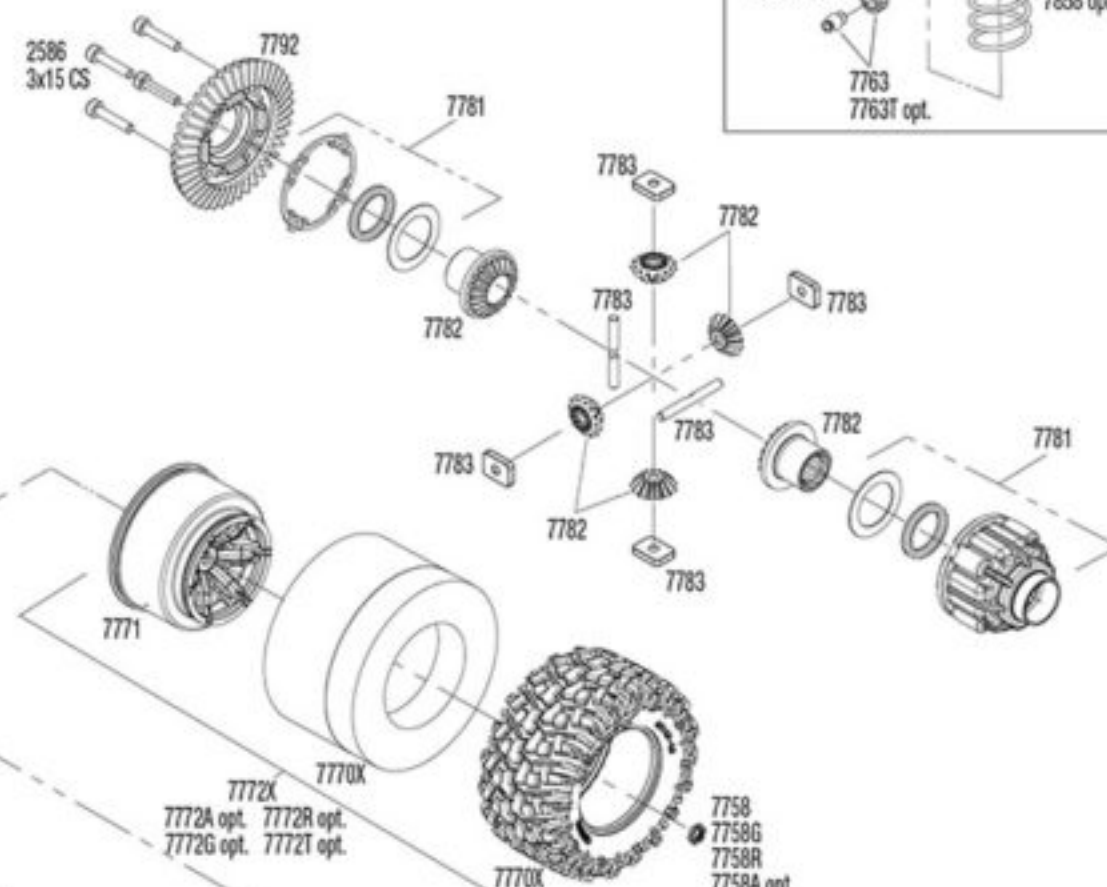
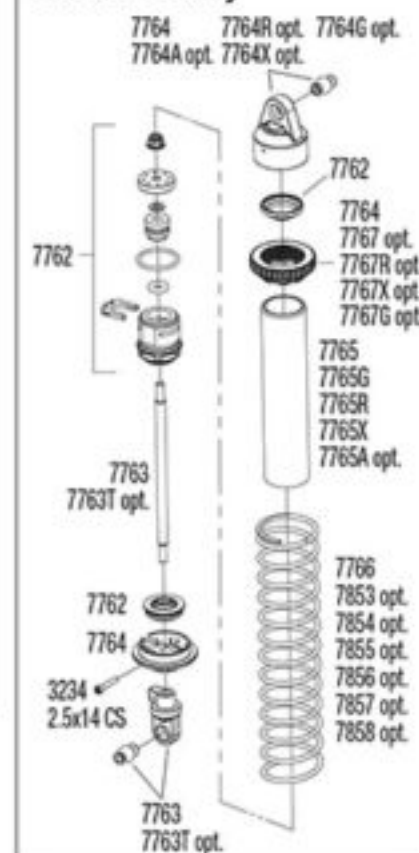


NOTE THAT THE SHORTER  
END OF THE PIVOT BALL  
IS ON THE BOTTOM

## Steering Assembly



### Shock Assembly



REV 200310-R15  
See Parts List for a complete  
listing of optional accessories.

Specifications on this page are subject to change without notice. Every attempt has been made to ensure the accuracy of this drawing; however, Traxxas cannot be held responsible for typographical or other errors.



**XMAXX**  
Front Assembly

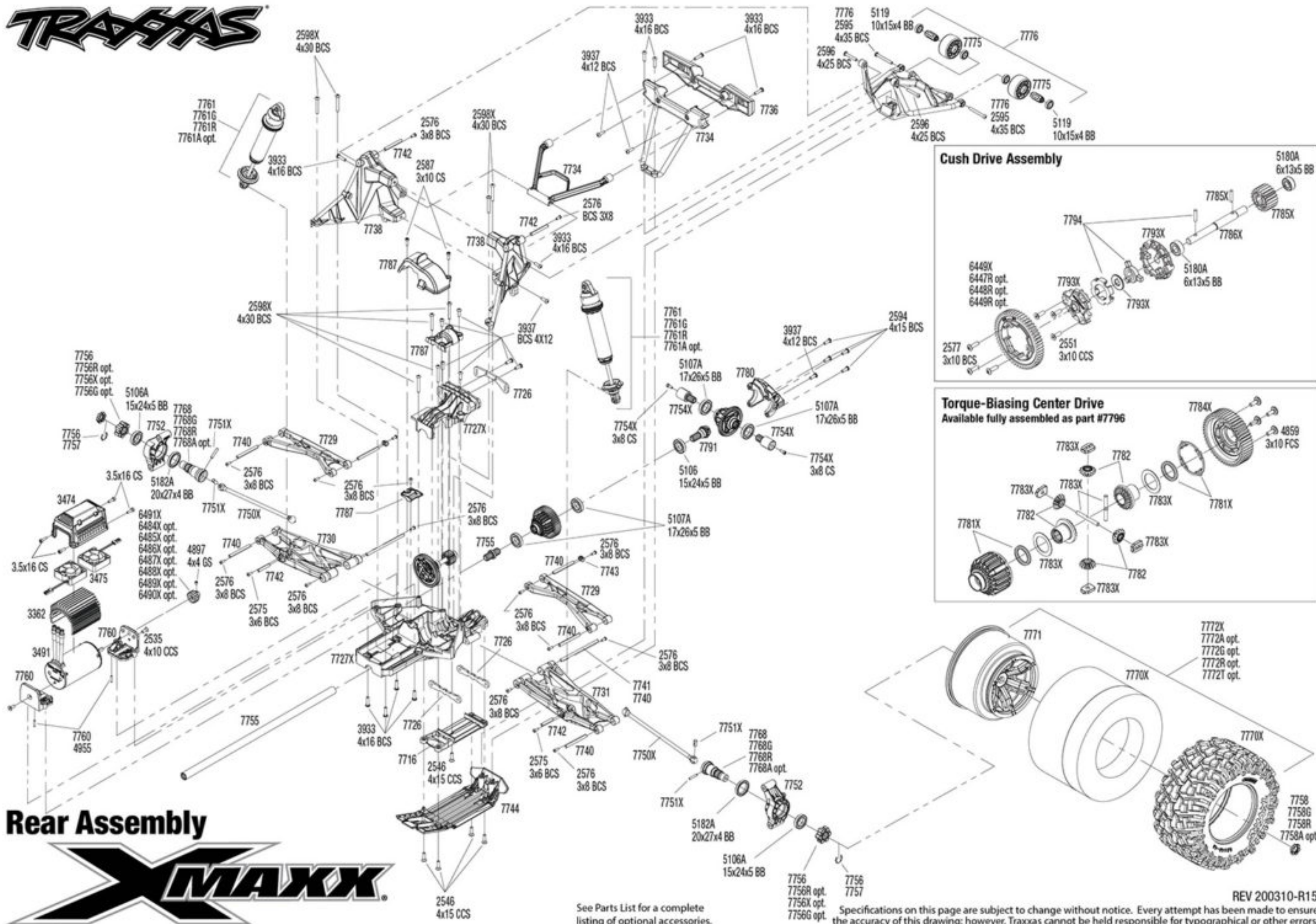




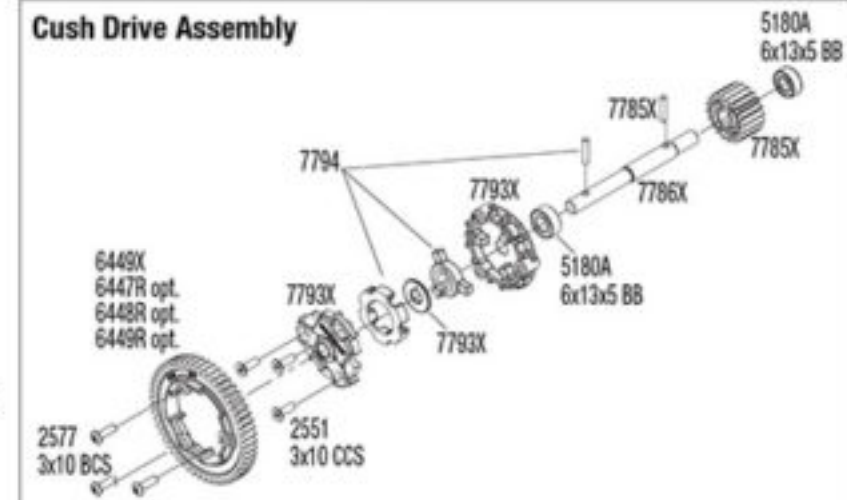
# TRAXXAS

## Rear Assembly

# X-MAXX

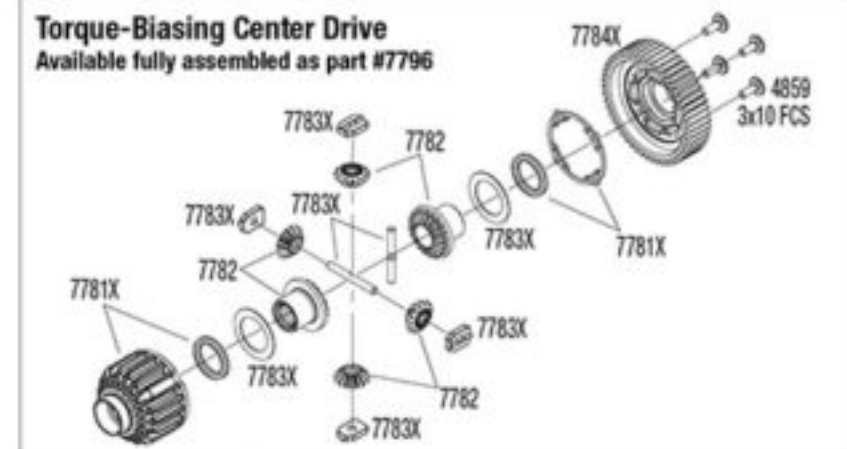


### Cush Drive Assembly



### Torque-Biasing Center Drive

Available fully assembled as part #7796



See Parts List for a complete listing of optional accessories.

Specifications on this page are subject to change without notice. Every attempt has been made to ensure the accuracy of this drawing; however, Traxxas cannot be held responsible for typographical or other errors.

REV 200310-R15