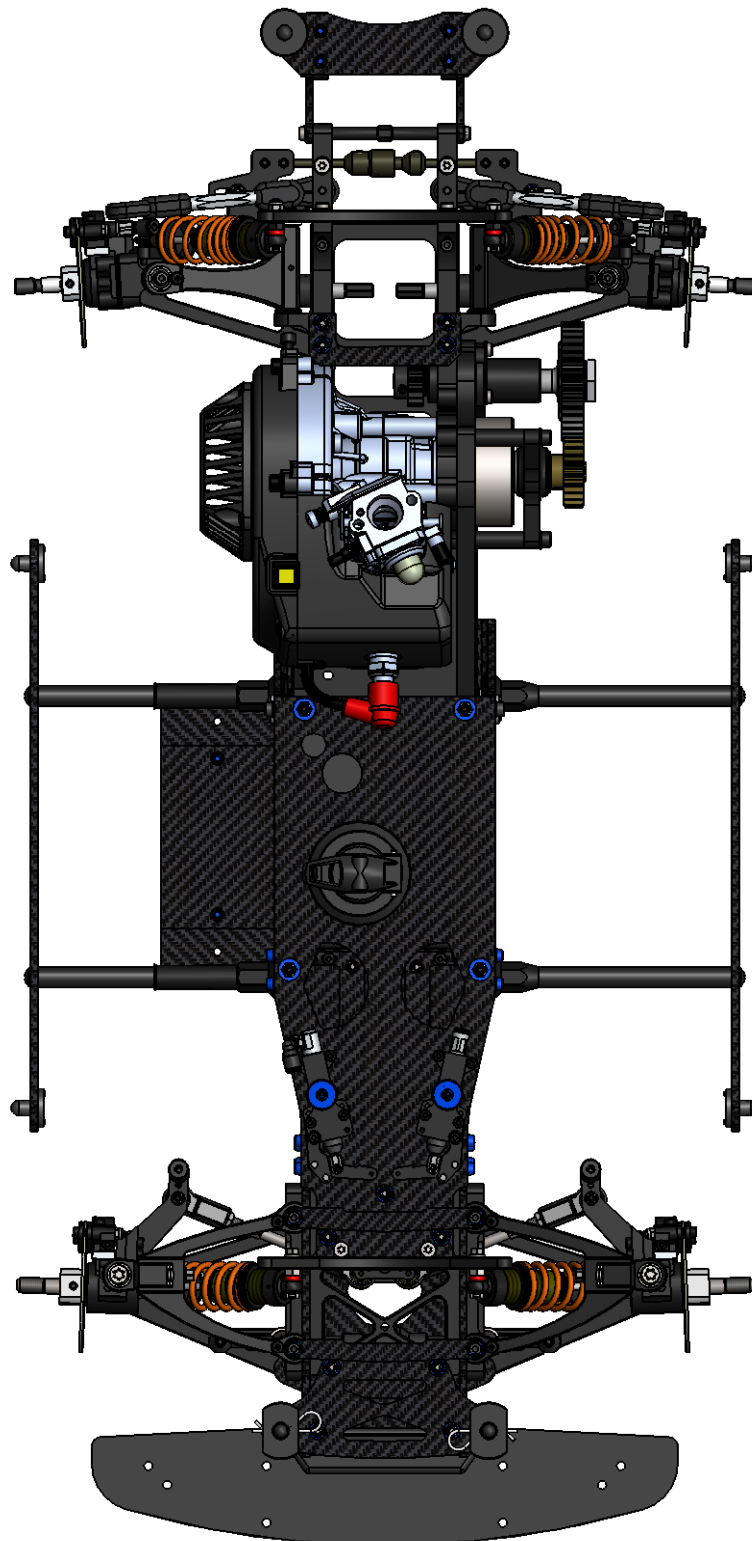
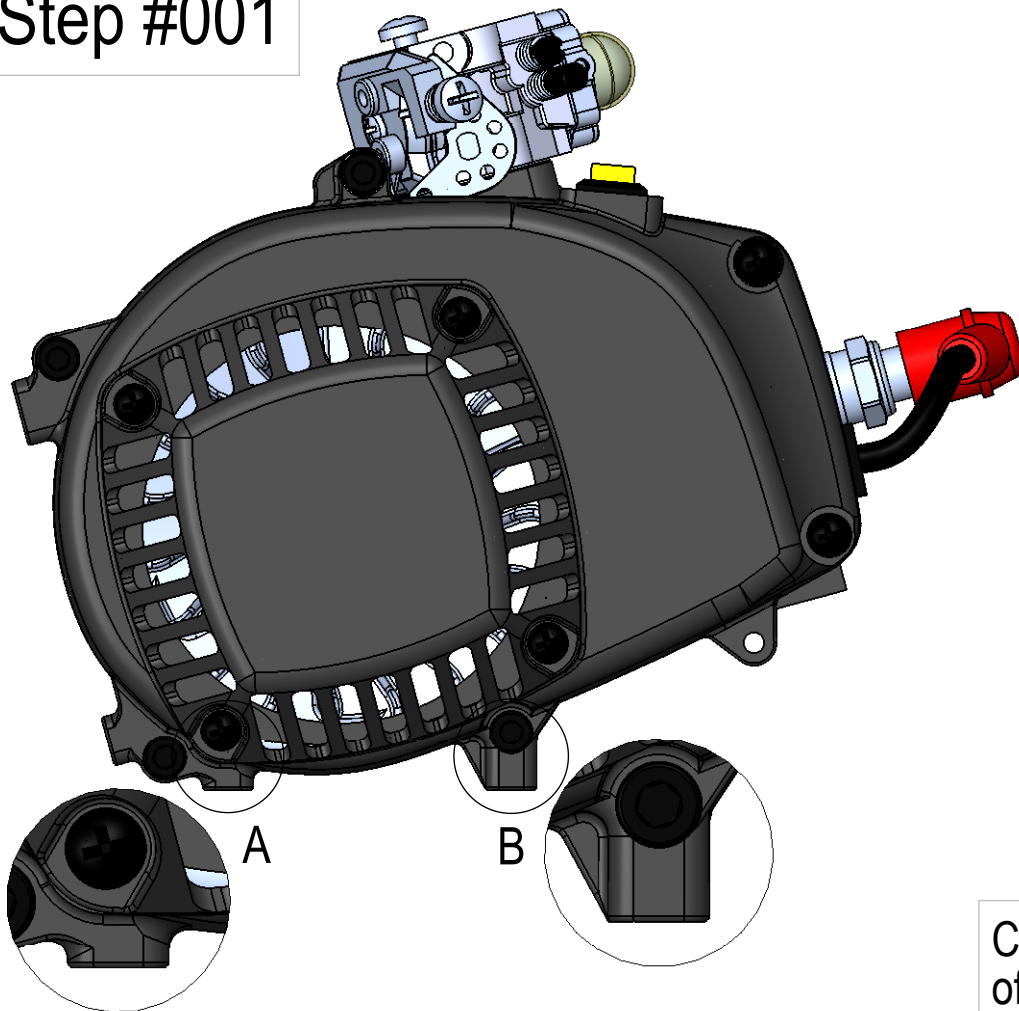


Engine modification and mounting guide for RS5 T12 Touring Car



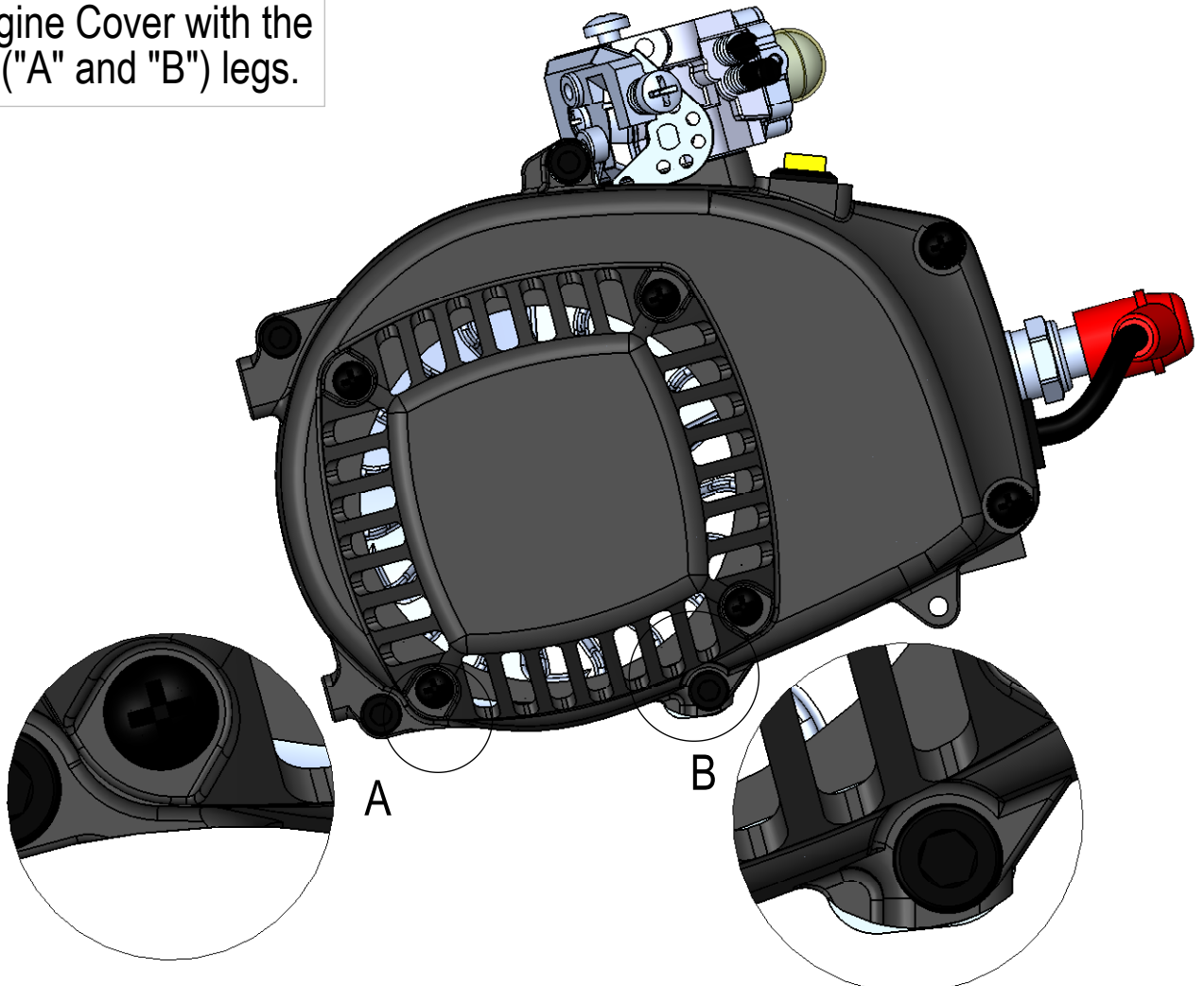
This guide will help You, to modify and mount
Your Zenoah G230/G240 engine correctly to
Your RS5 T12 car

Step #001

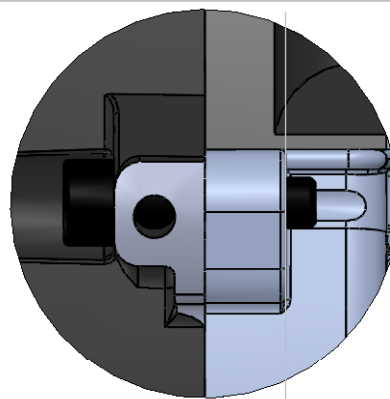
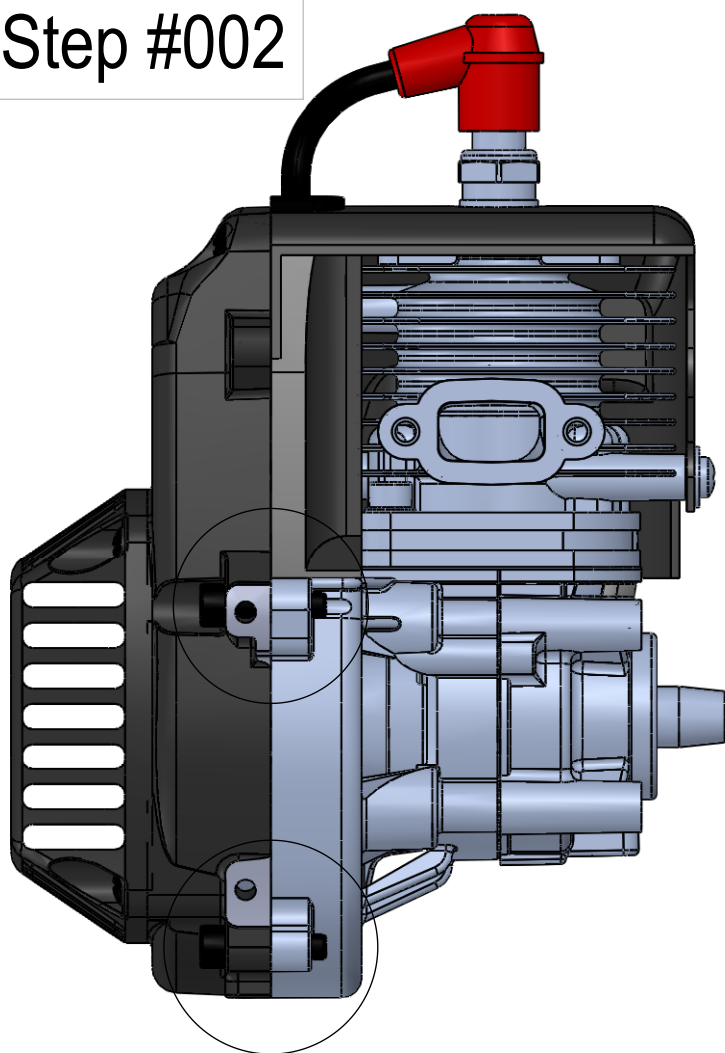


Cut the 2 ("A" and "B") leg
of the alloy engine cover

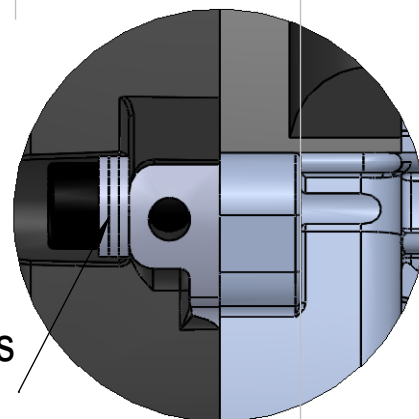
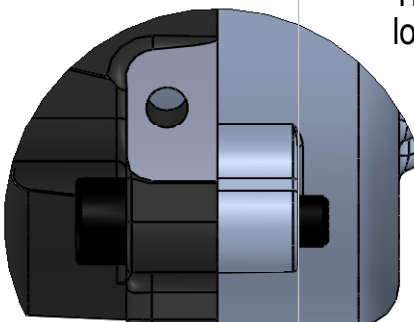
Alloy Engine Cover with the
cutted 2 ("A" and "B") legs.



Step #002

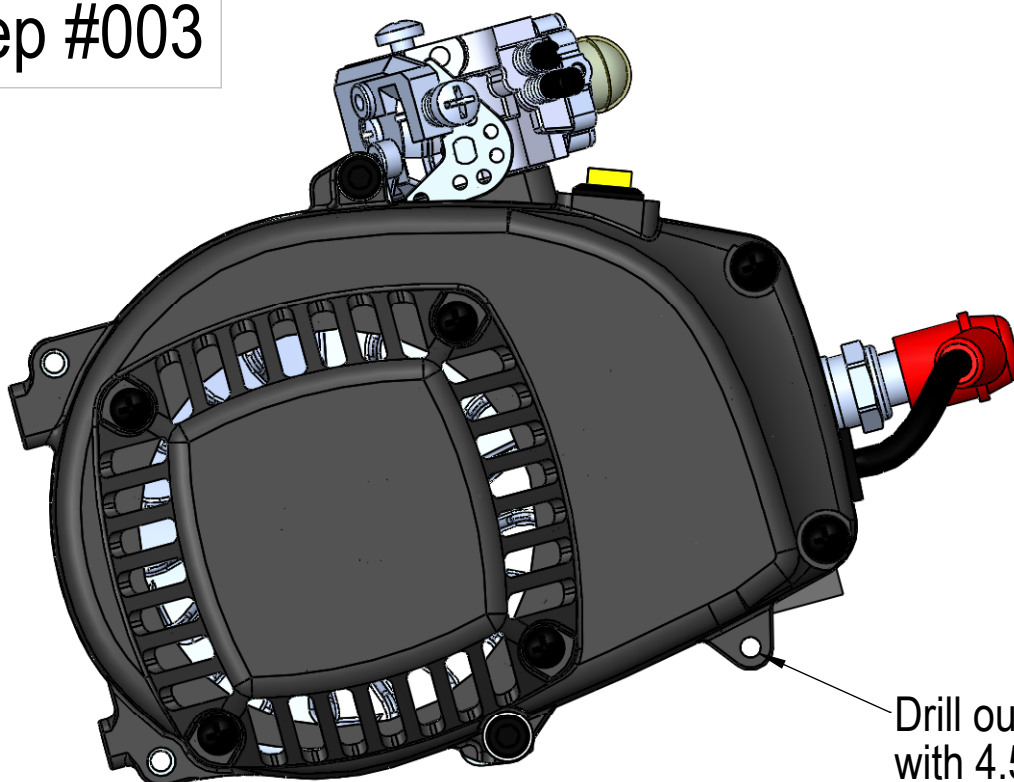


← This 2 pcs M5 bolt can't loll out, behind this line



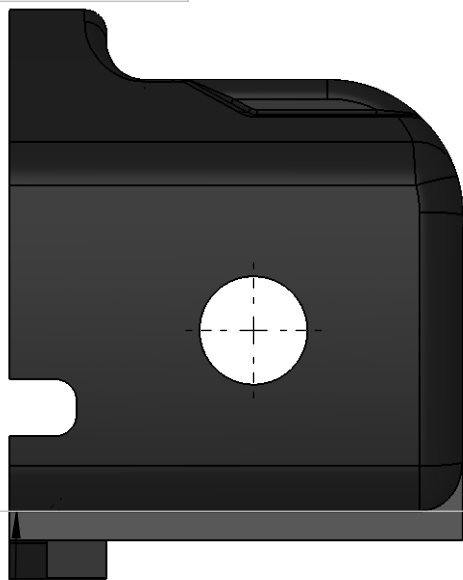
Put so many washers between the M5 bolts and the alloy engine cover, until the M5 bolts don't loll out, behind the line.

Step #003



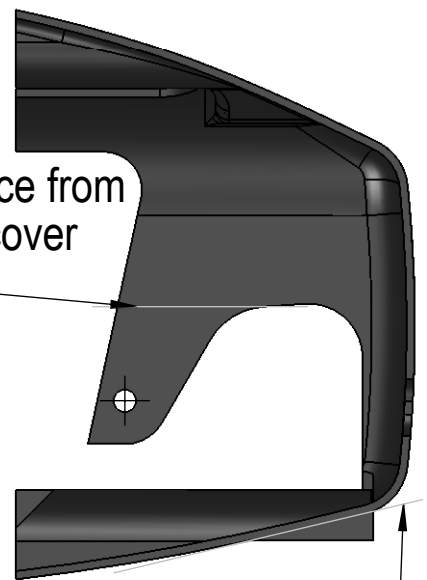
Drill out this threaded with 4.5 mm drill

Step #004



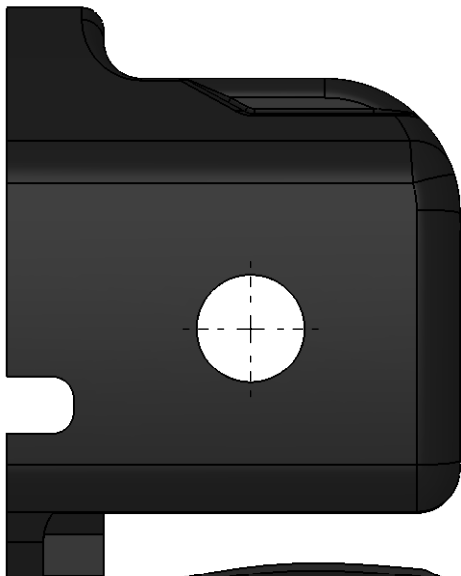
Cut out the plastic pice from the Plastice engine cover until the line

Cut out the plastic pice from the Plastice engine cover until the line



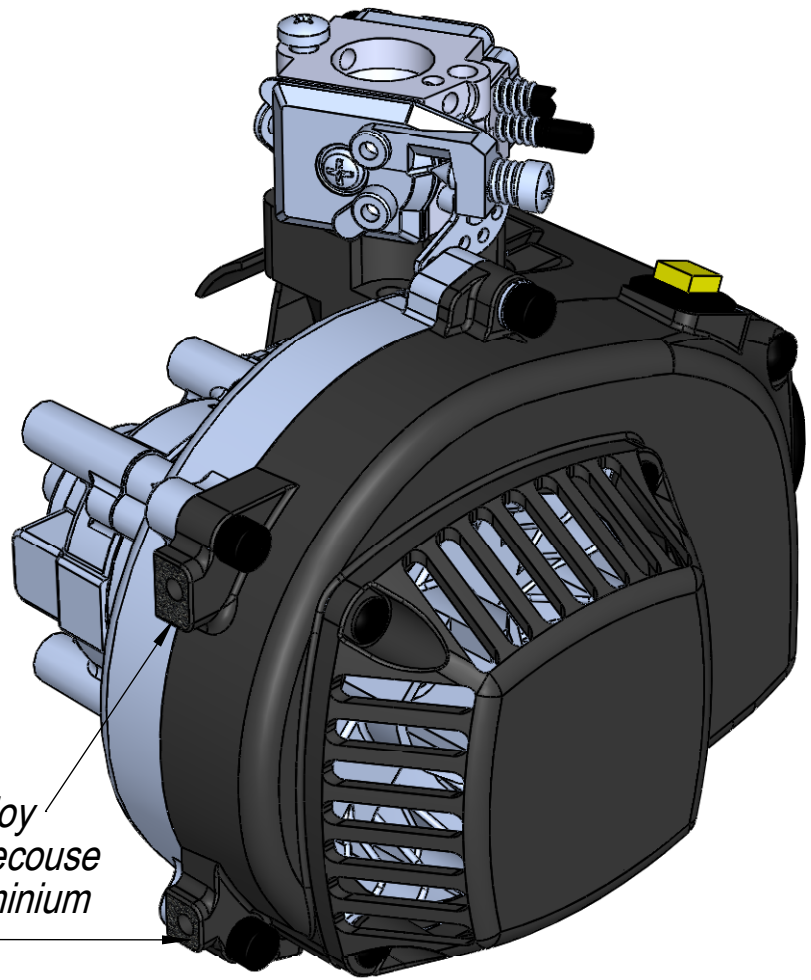
Cut out the plastic pice from the Plastice engine cover until the line

After modification (cutting), the plastic engine cover will look the following



Step #005

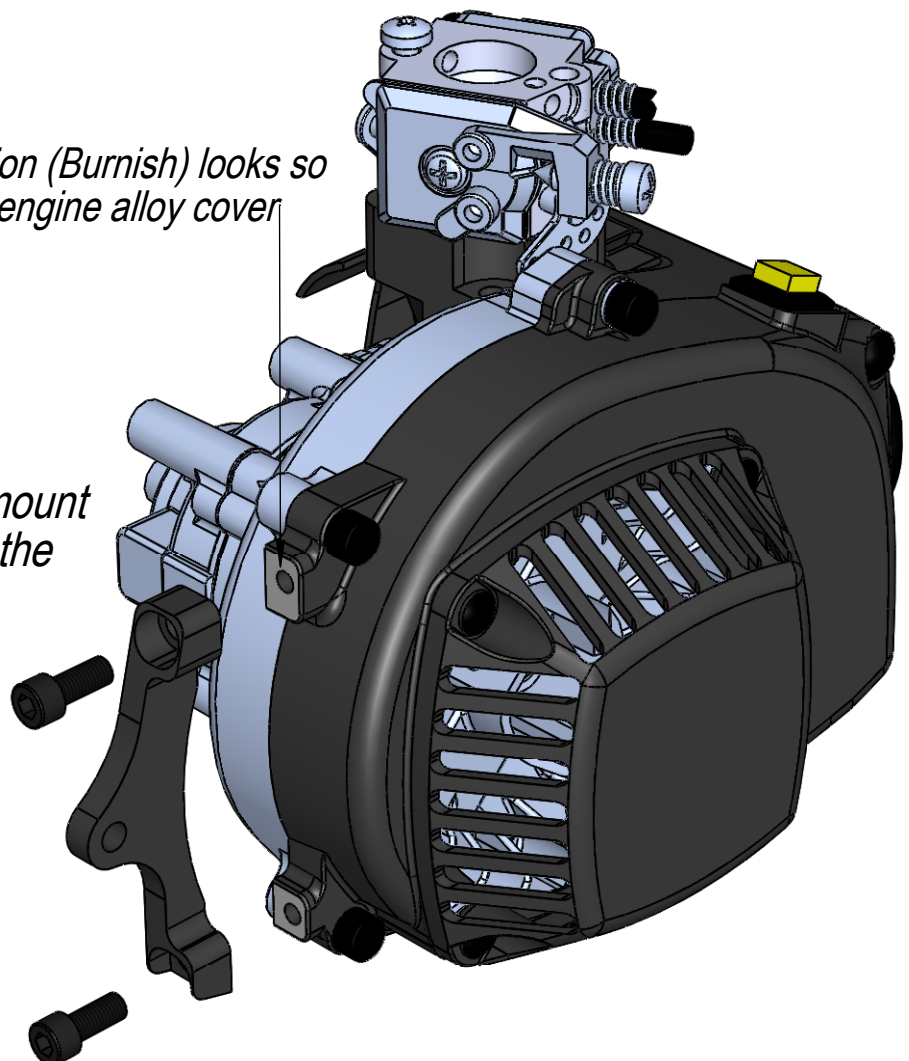
Burnish to straight the 2 leg of the alloy engine cover. You need to do this, because reason of the mass production (Alluminium molding) the surface are uneven.



Step #006

After modification (Burnish) looks so the legs of the engine alloy cover

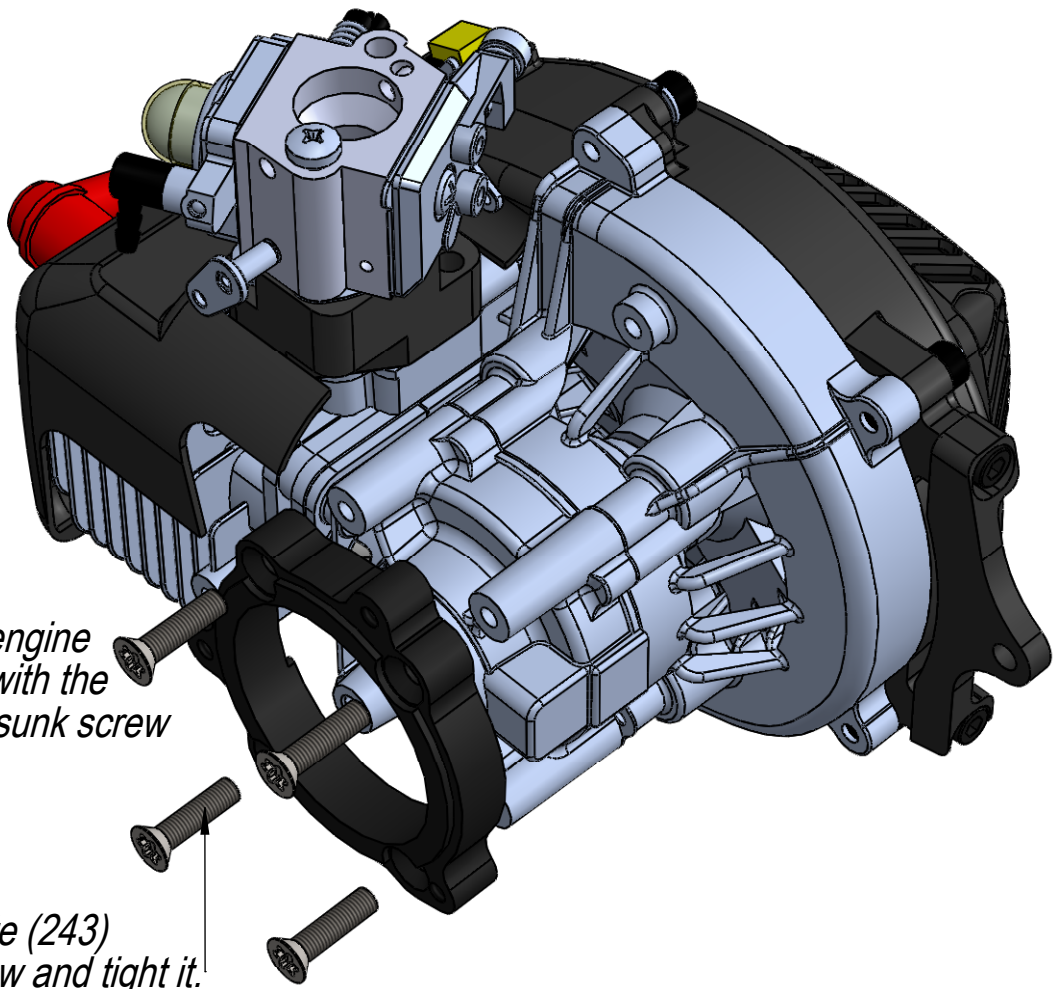
Mount the "27014" Engine mount to the engine, but dont tight the 2 pcs M5x12 screw. Don't use any glue now!



Step #007

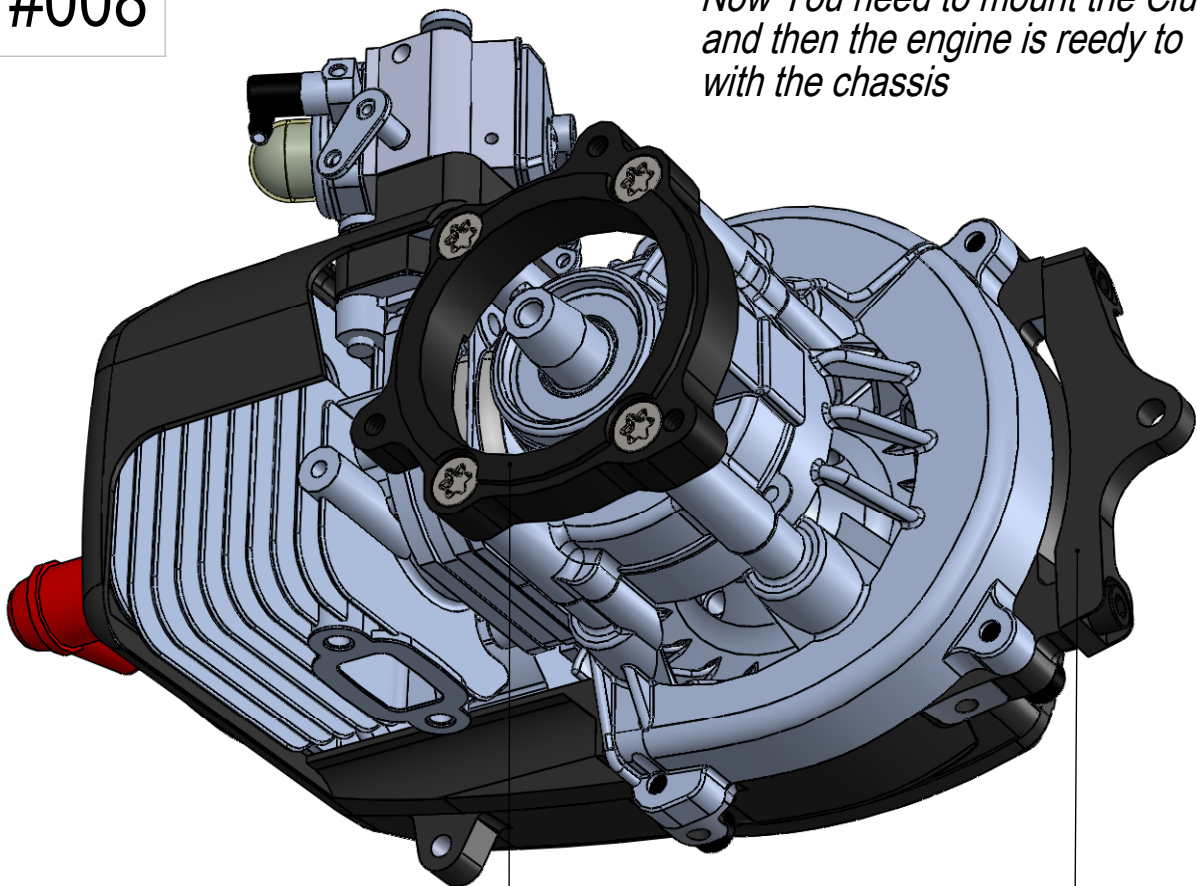
Mount the "27002" engine mount to the engine with the 4 pcs M5x20 countersunk screw

Use blue Loctite (243) for all four screw and tight it.



Step #008

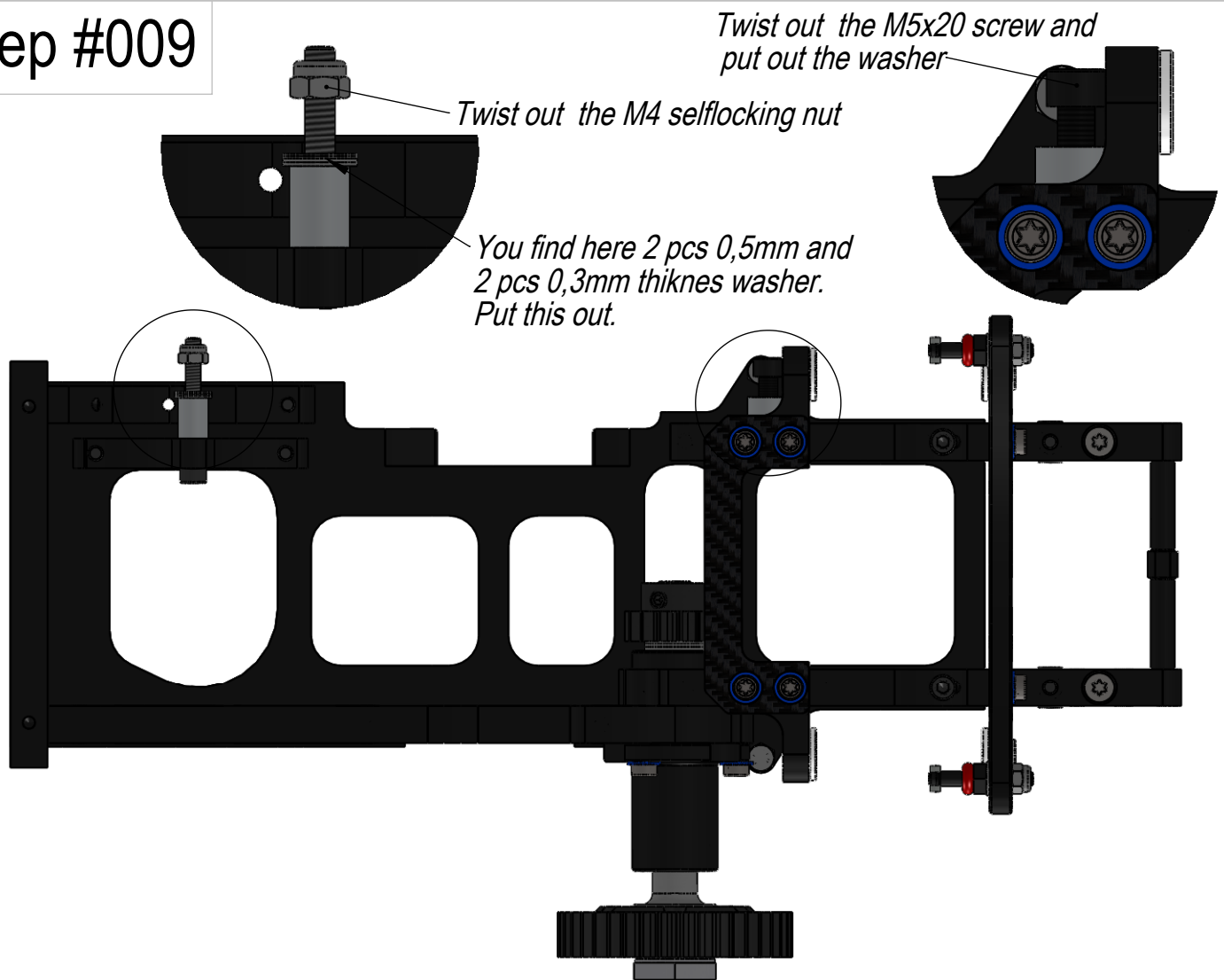
Now You need to mount the Clutch, and then the engine is ready to "marry" with the chassis



The correct mounted "27002" engine mount looks so.

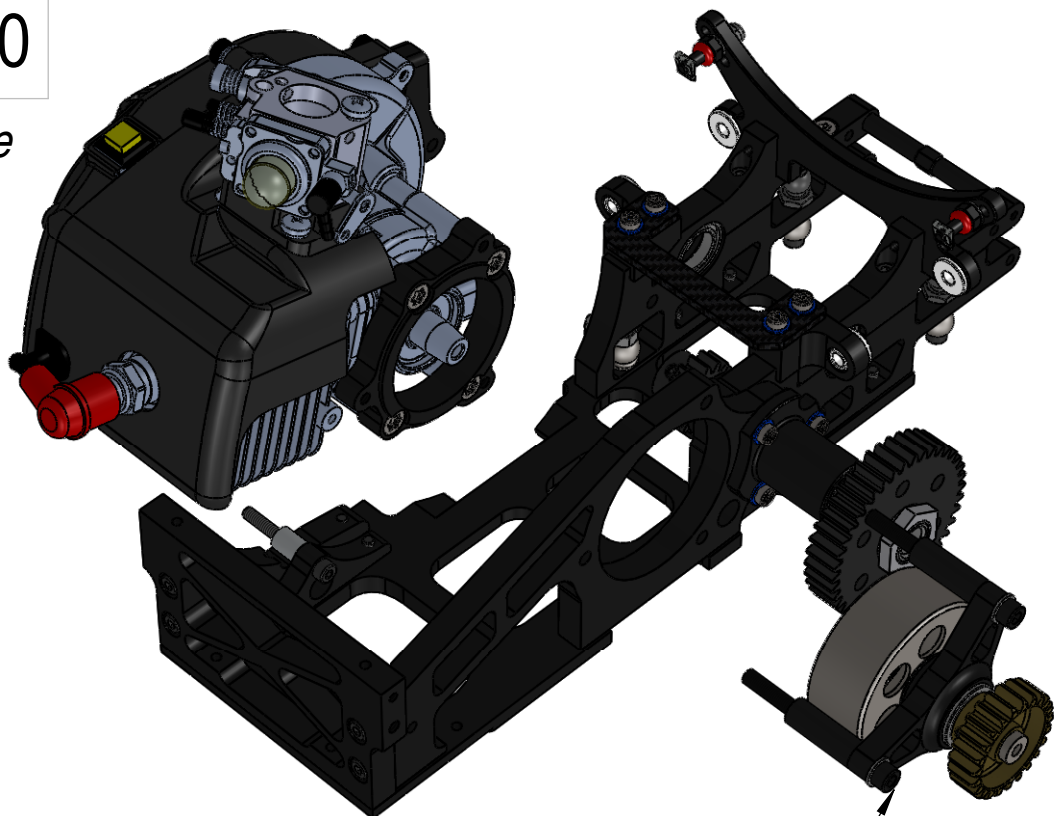
The correct mounted "27014" engine mount looks so.

Step #009



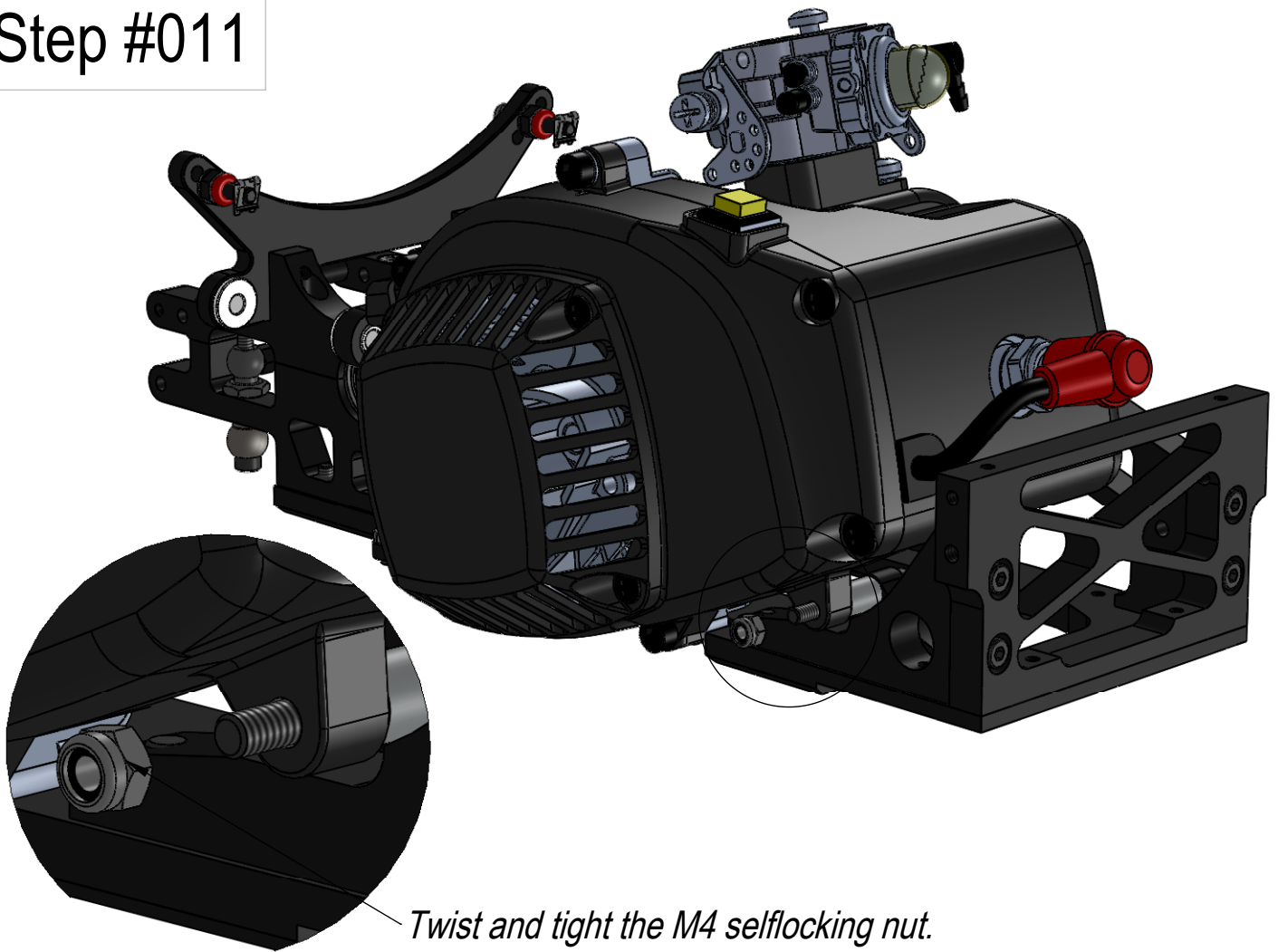
Step #010

Put the engine into the car.

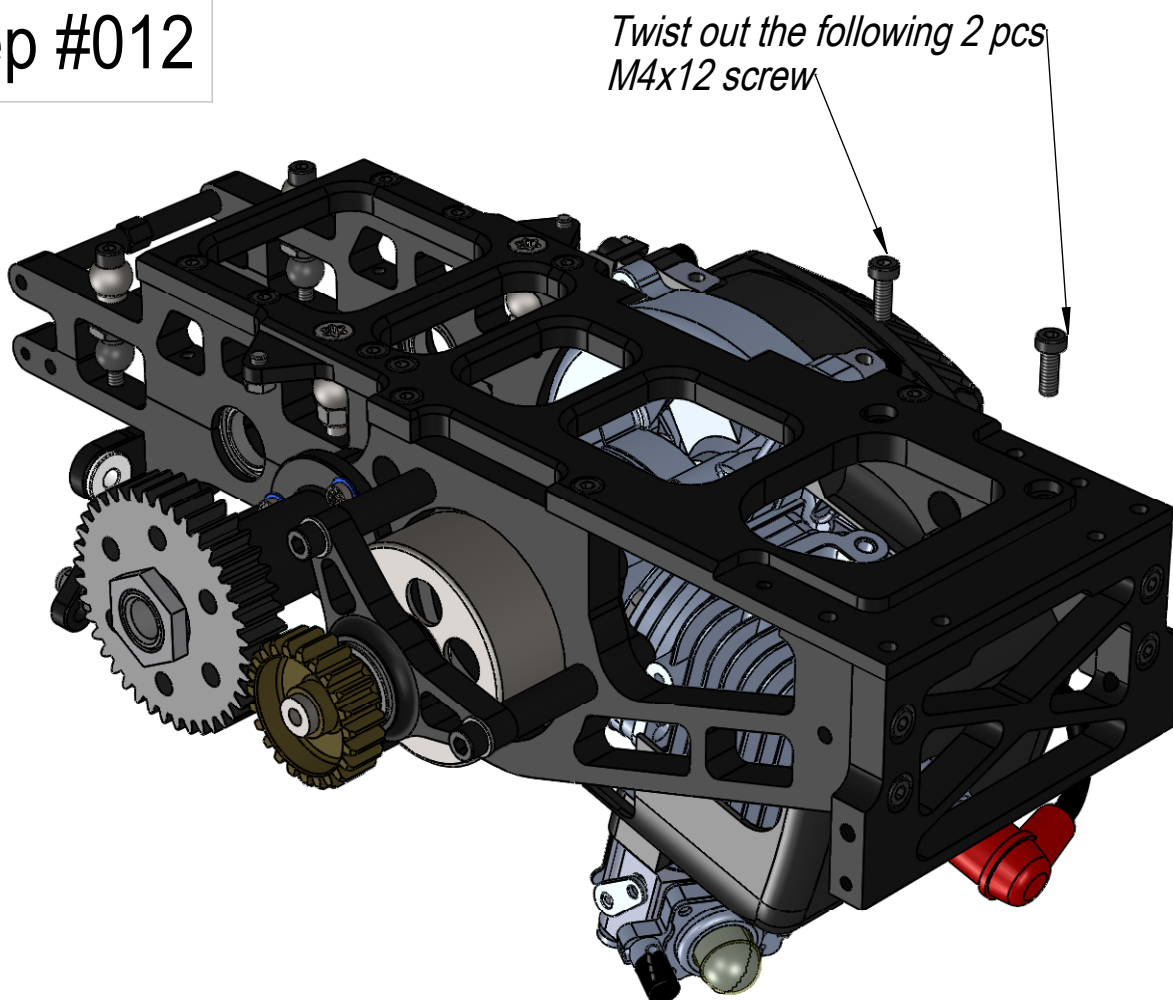


*Tight the 3 pcs M5x53mm screw.
Don't use any glue!!!*

Step #011

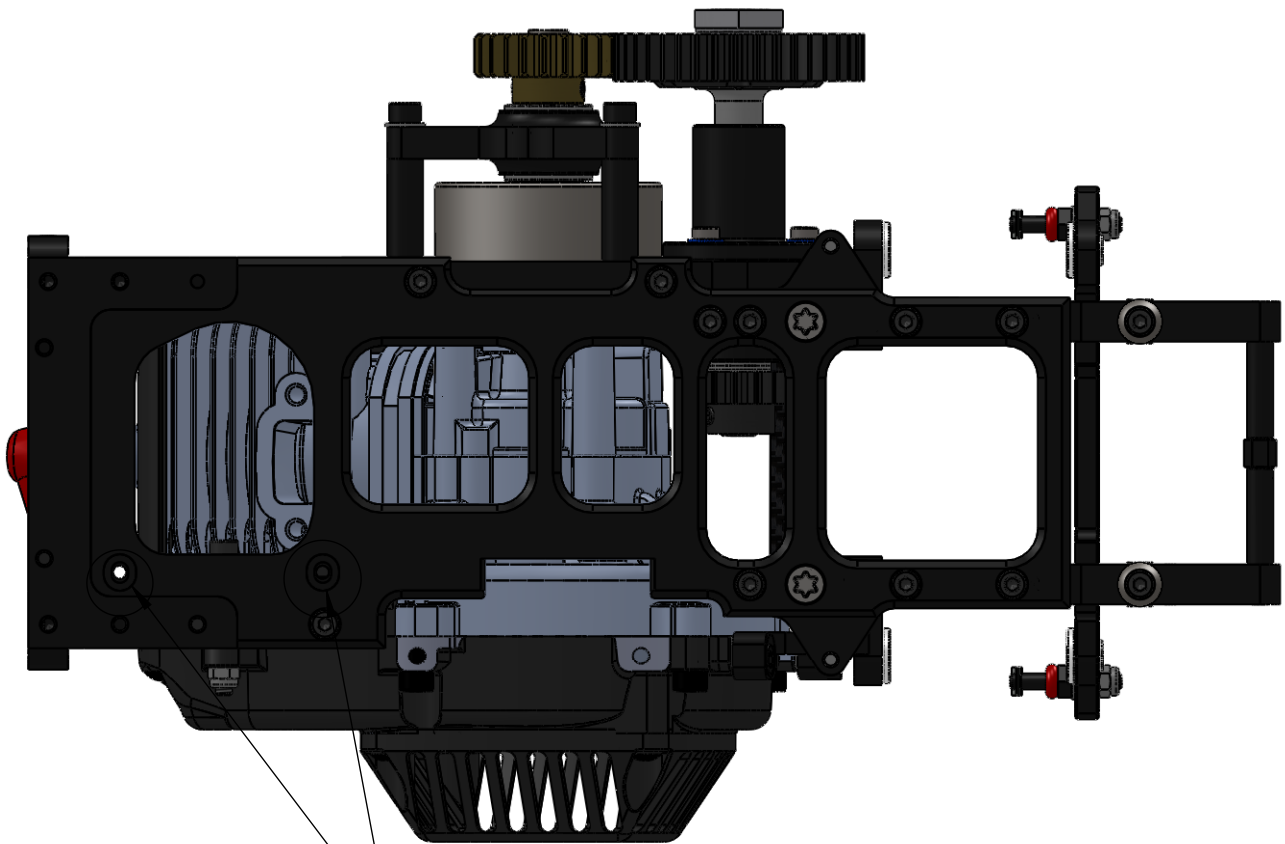


Step #012



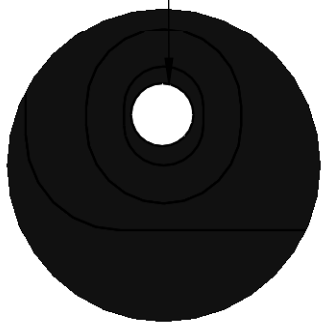
Step #013

The Zenoah engines has big tolerance. The dimensions of the alloy engine cover (thicknes) and the position of the holes (threadeds) are differents at every single engine. Tath reason You need to position every engine separetly with different washers. To mount the engine correctly is very important, because an wrong mounted engine can bend Your car!.



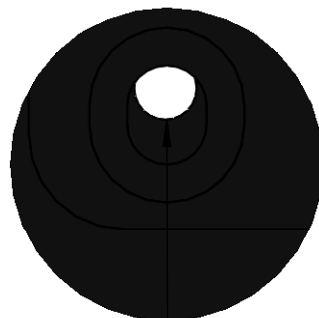
First You need to check the thread position (up and down, shown on the picture) of the "27013" engine mount..

If the thread is on the center (shown on the picture) then everithing correct, You need to do nothing.

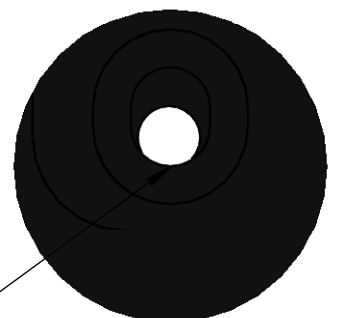


Correct

Incorrect



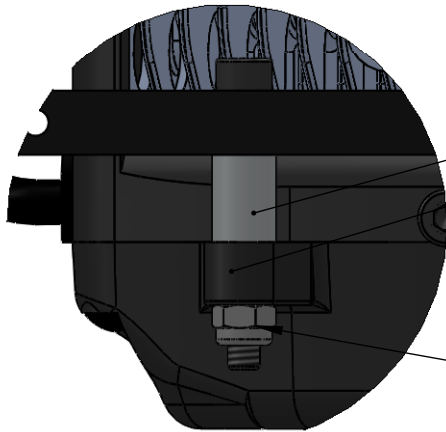
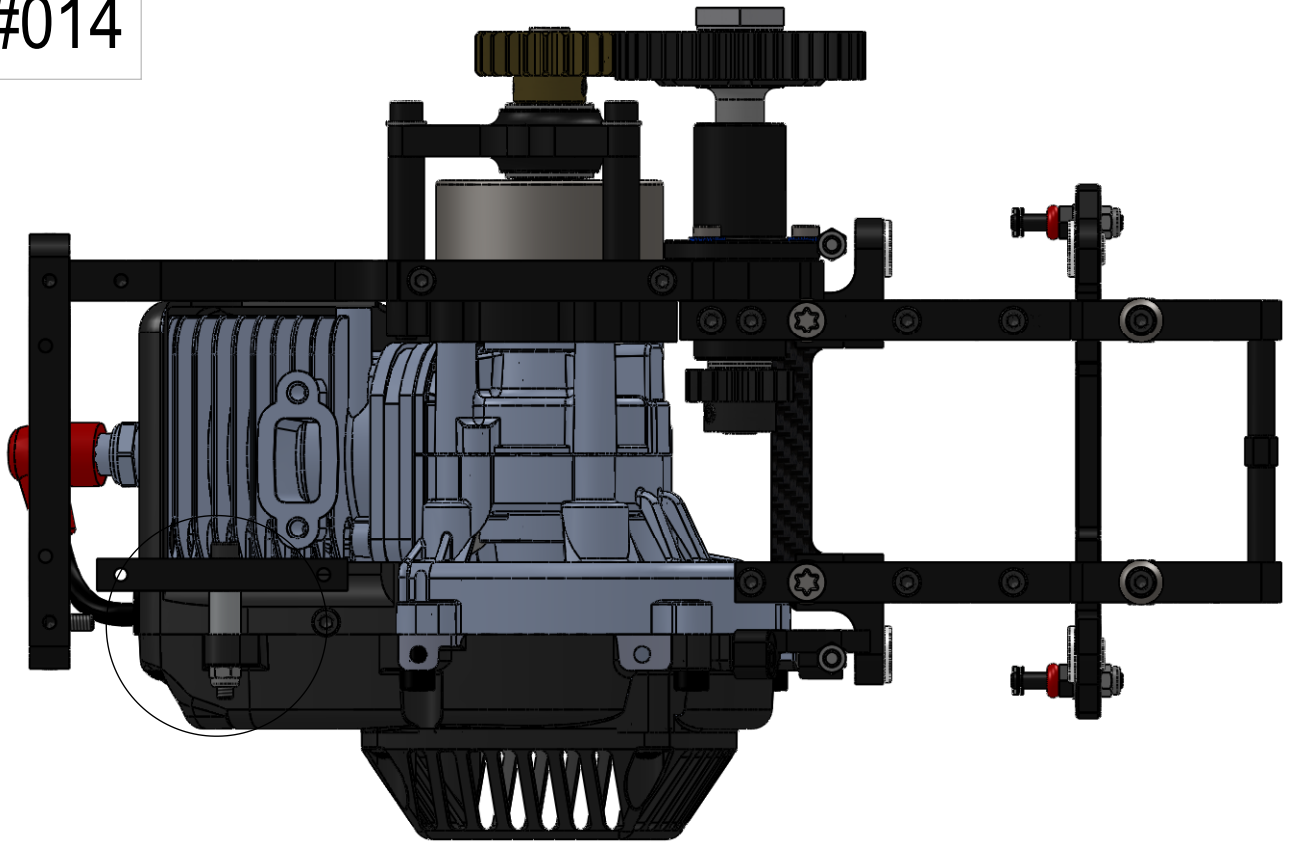
Incorrect



If the thread is offsetted from the center (shown on the picture) up or down then it is incorrect, and You need to position it to the center, by mounting washers between the "27013" engine mount, and between the alloy engine cover.

Shown how to, on the next page.

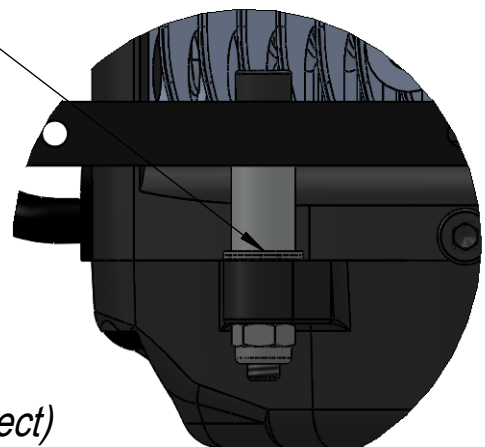
Step #014



*When the "27013" engine mount was offsetted then You need to put washers between the :
Spacer of the "27013"
and between the alloy engine cover*

You can easily take off the "27013" engine mount by twisting out the M4 selflocking nut.

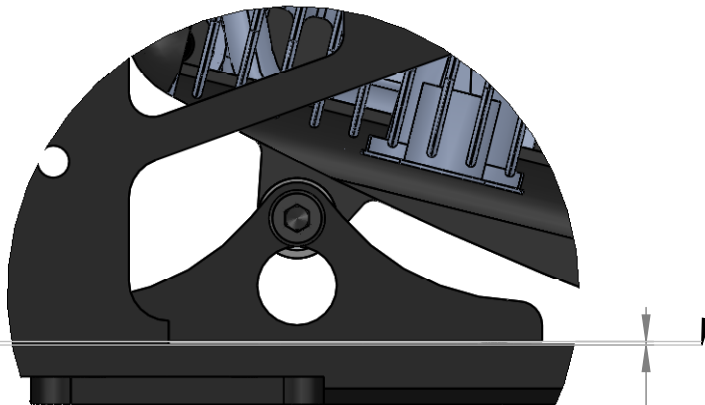
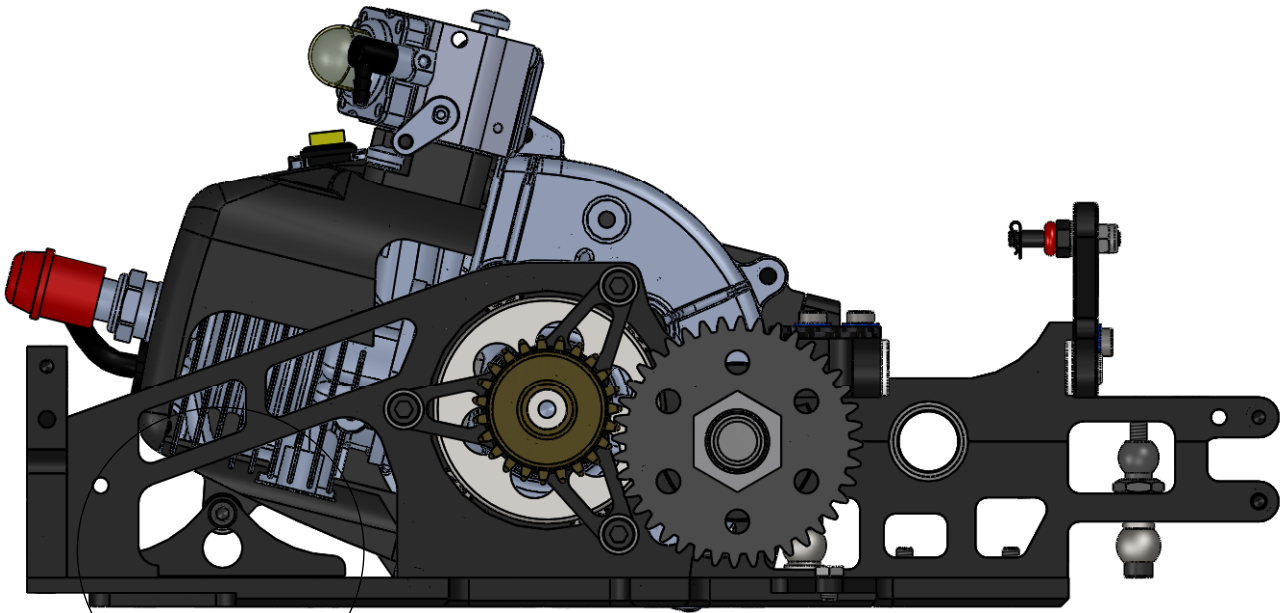
Here You can see the mounted washers between the "27013" engine mount and between the alloy engine cover. You can find does washers (shawn on the picture) at the "Step #009" (does washers was, wath You take off from the "27013" engine mount)



*When the "27013" engine mount now on the center (correct) then You need to put back the 2 pcs M4x12 screw and tight it tath is shown on the "Step#012".
Don't glue it!!!*

Step #015

Now You need to Twist out the 2 pcs M4x12 screw tath is shown on the "Step#012".

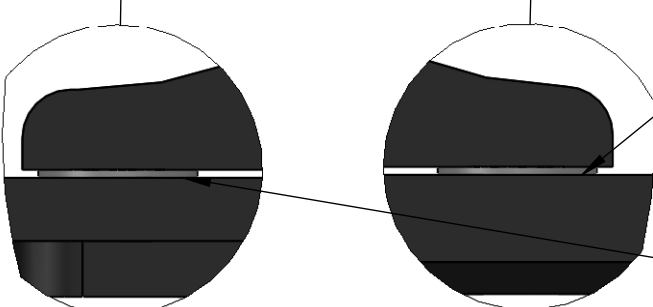
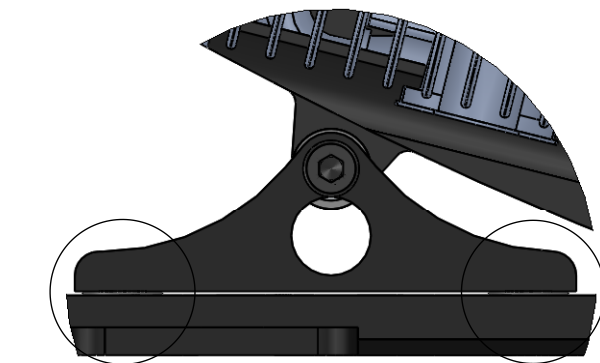


Now You need to messure the distance between the "10030" alloy chassis and between the "27013" engine mount with an feeler gauge.

- If the distance is between 0 - 0.05mm, then You need to do nothing

- If the distance is between 0.05 - 0.25mm, then You need to mount an 0.3 mm thick washer between the "10030" alloy chassis and between the "27013" engine mount

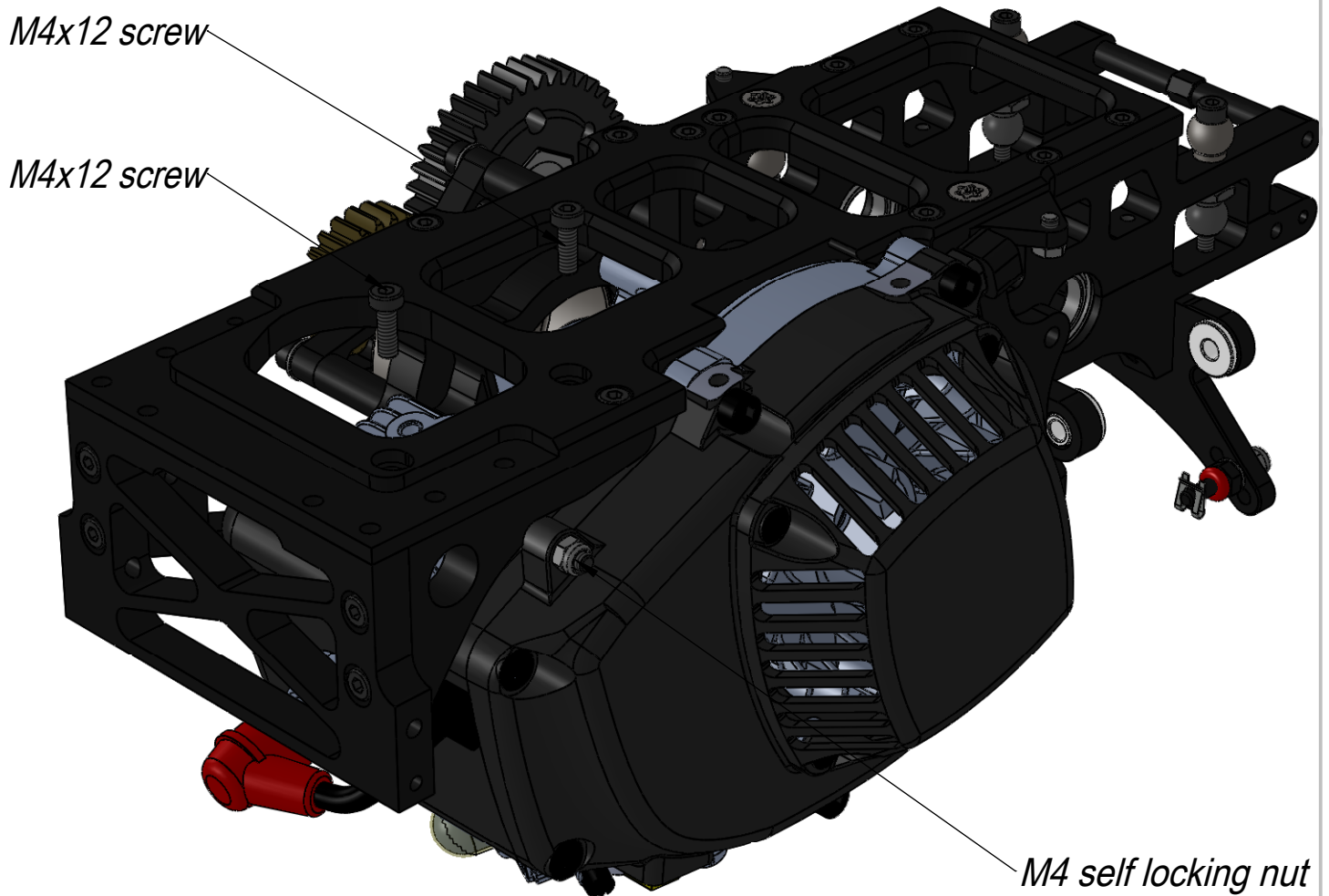
- If the distance is between 0.3 - 0.45mm, then You need to mount an 0.5 mm thick washer between the "10030" alloy chassis and between the "27013" engine mount



Here You can see the mounted washers between the "27013" engine mount and between the "10030" alloy chassis. You can find does washers (shawnon the picture) at the "Step #009" (does washers was, wath You take off from the "27013" engine mount)

Step #016

Now the distance between "27013" engine mount and between the "10030" alloy chassis and the engine is correct. Now You need to palce all parts to his correct position. For this You need to follow our recomend engine mount tightening sequence.

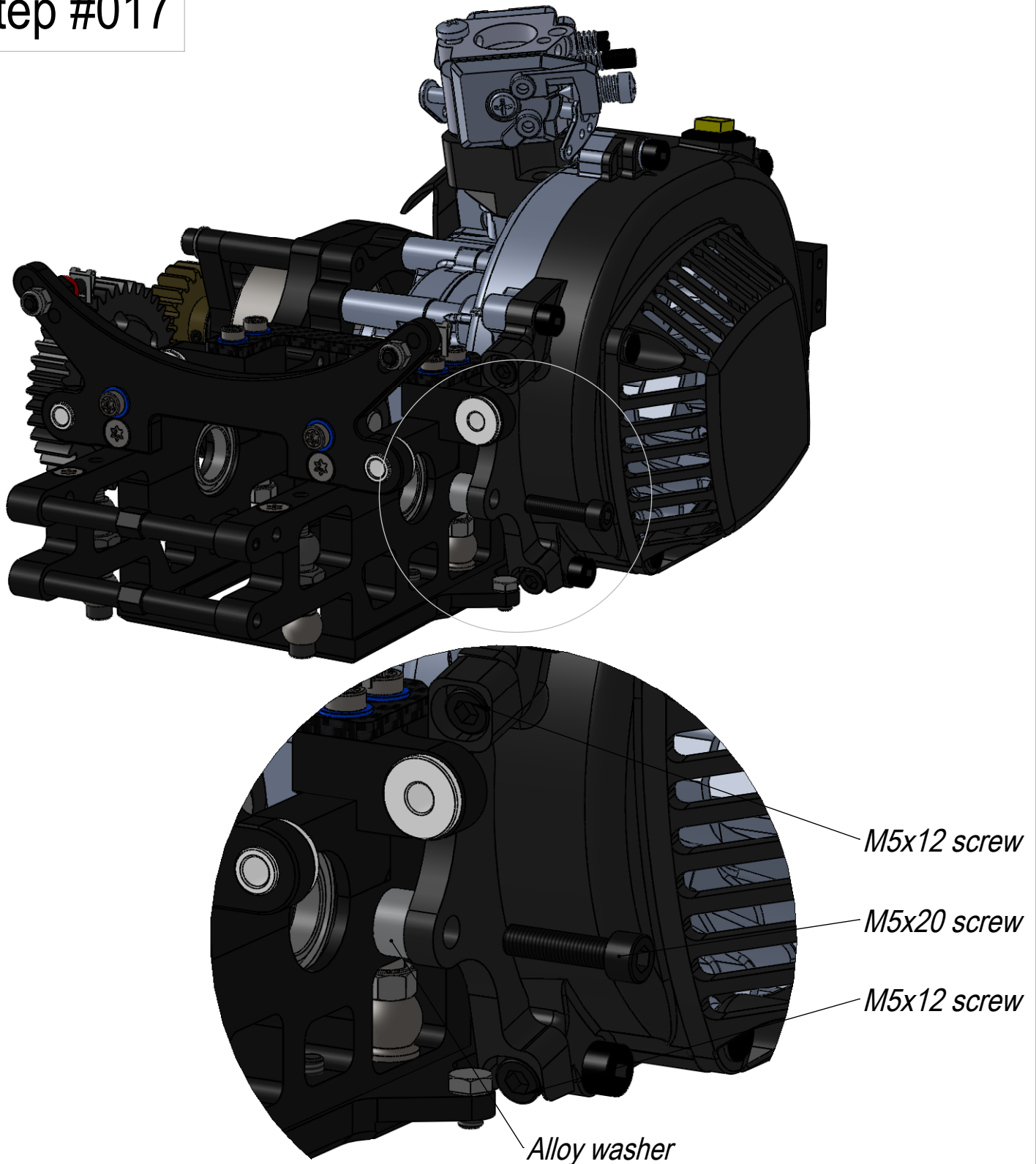


Engine mount tightening sequence:

- Twist in and tight the 2 pcs "M4x12 screw"
- Loose the "M4 self locking nut" (Not twist out, only loose)
- Tight the "M4 self locking nut"
- Loose the 2 pcs "M4x12 screw" (Not twist out, only loose)
- Tight the 2 pcs "M4x12 screw"
- Twist out the first "M4x12 screw"
- Glue with Loctite 243, and twist in and tight the first "M4x12 screw"
- Twist out the second "M4x12 screw"
- Glue with Loctite 243, and twist in and tight the second "M4x12 screw"

When You remove the engine from the car and You mount it back again, You need to repate this "tightening sequence", to position the "27013" engine mount to his correct position!!!

Step #017

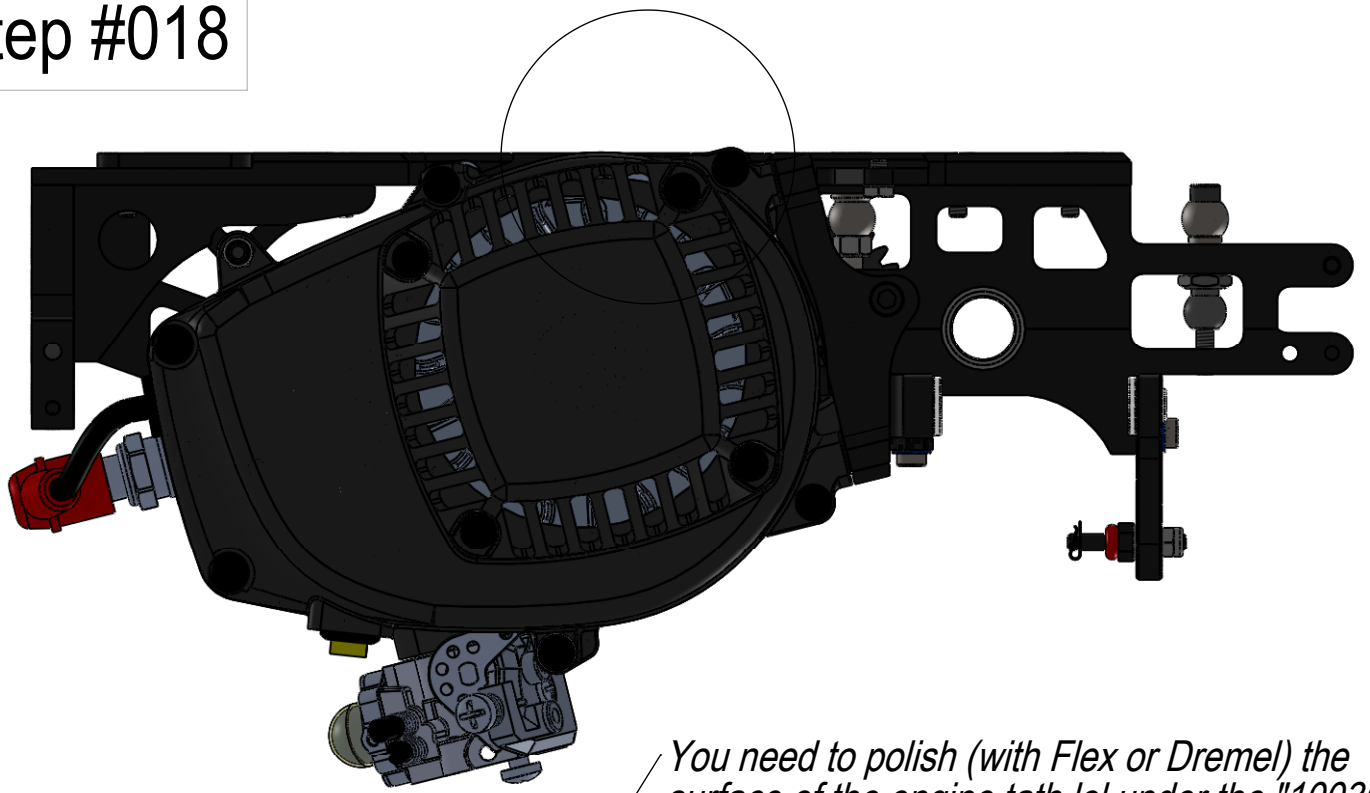


Rear engine mount tightening sequence:

- Put the "alloy washer" on his palce and twist in and tight the "M5x20 screw"
- Twist out the 2 pcs "M5x12 screw"
- Glue with Loctite 243, and twist in and tighthe the 2 pcs "M5x12 screw"
- Twist out the "M5x20 screw"
- Glue with Loctite 243, and twist in and tighthe the "M5x20 screw"

When You remove the engine from the car and You mount it back again, You need to repate this "tightening sequence", to position the "27014" engine mount to his correct position!!!

Step #018



You need to polish (with Flex or Dremel) the surface of the engine tath lol under the "10030" chassis plate.(see thoses parts on the picture over the line)

